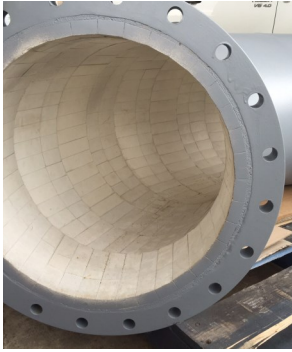




FIELD FURNACE REFRACTORIES PTY. LTD.

ACN 083 132 432 ABN 88 083 132 432

FFR Lined Pipe Systems



FFR Lined Pipes for resistance to:

- ◆ Abrasion
- ◆ Erosion
- ◆ Corrosion

FFR Lining Systems are typically used in:

- ◆ PF Lines
- ◆ Ash hoppers and pipes
- ◆ Slurry pipelines
- ◆ Coal preparation
- ◆ Bunker linings
- ◆ Ball mill liners

Field Furnace offers an extensive range of well proven lining solutions for abrasive and erosive conditions in pipes carrying dry or wet product.

Heavy industries such as Power Stations, Steel Mills, Cement Mills as well as mining and ore preparation plants benefit from the use of lined pipe designed specifically to combat the particular requirements of each individual application.

Depending on the application and properties required, FFR lining systems would be supplied in:

- ◆ Cast Basalt shapes
- ◆ Alumina shapes and tiles
- ◆ Silicon Carbide shapes

With each grade providing different physical properties and service temperature limit.

Cast Basalt

Cast Basalt has become the general standard for the lining of applications such as steel mill sinter bins, power station ash slurry pipework and iron ore slurry piping. A cost effective material that will significantly outperform standard iron and steel piping for both abrasion and corrosion resistance. Cast Basalt is supplied as a cast shape, to the particular shape required.

Alumina Ceramics

Alumina is one of the hardest known materials. Offering high density, strength and exceptional hardness, Alumina lined pipes and shapes are offered where greater resistance to abrasion is required than cast basalt can provide, such as PF lines in coal fired power stations. Alumina ceramics are typically supplied as either isostatically pressed tiles, or unique shapes for a particular application

Assisting with all your ceramic needs for over 35 years.

Field Furnace
Refractories Pty Ltd

8 Arnott Place,
Wetherill Park, NSW, 2164

Phone: +61 2 9729 1799
Fax: +61 2 9729 1899
www.fieldfurnace.com.au





FIELD FURNACE REFRACTORIES PTY. LTD.

ACN 083 132 432 ABN 88 083 132 432

FFR Lined Pipe Systems



Silicon Carbide

For ultimate abrasion and erosion resistance, Nitride or Reaction bonded Silicon Carbide liners can be supplied. These materials are used where conventional cast basalt and alumina lining systems are proven to be ineffective against high velocity erosion.

Systems

Shapes: Field Furnace can offer customers a full range of lined piping sections, including straight, bends, elbows, tees, Y's and fittings.

Grade: Piping is generally supplied in mild steel, although other steel grades, including stainless can be supplied upon request.

Finish: Piping is blast and paint finished to specific customer requirements, including paint colour

Flanges: Piping can be supplied with Fixed or Floating flanges, as well as a range of other coupling and joint systems to suit particular requirements.

Supply

FFR Lined Systems are typically supplied as a unique shape for each individual application. Please contact us for assistance in designing a suitable lining for your specific application.

For all applications and enquiries please contact:

Kevin Millar: +61 447 614 558
kevin@fieldfurnace.com.au

Assisting with all your ceramic needs for over 35 years.

Field Furnace
Refractories Pty Ltd

8 Arnott Place,
Wetherill Park, NSW, 2164

Phone: +61 2 9729 1799
Fax: +61 2 9729 1899
www.fieldfurnace.com.au

